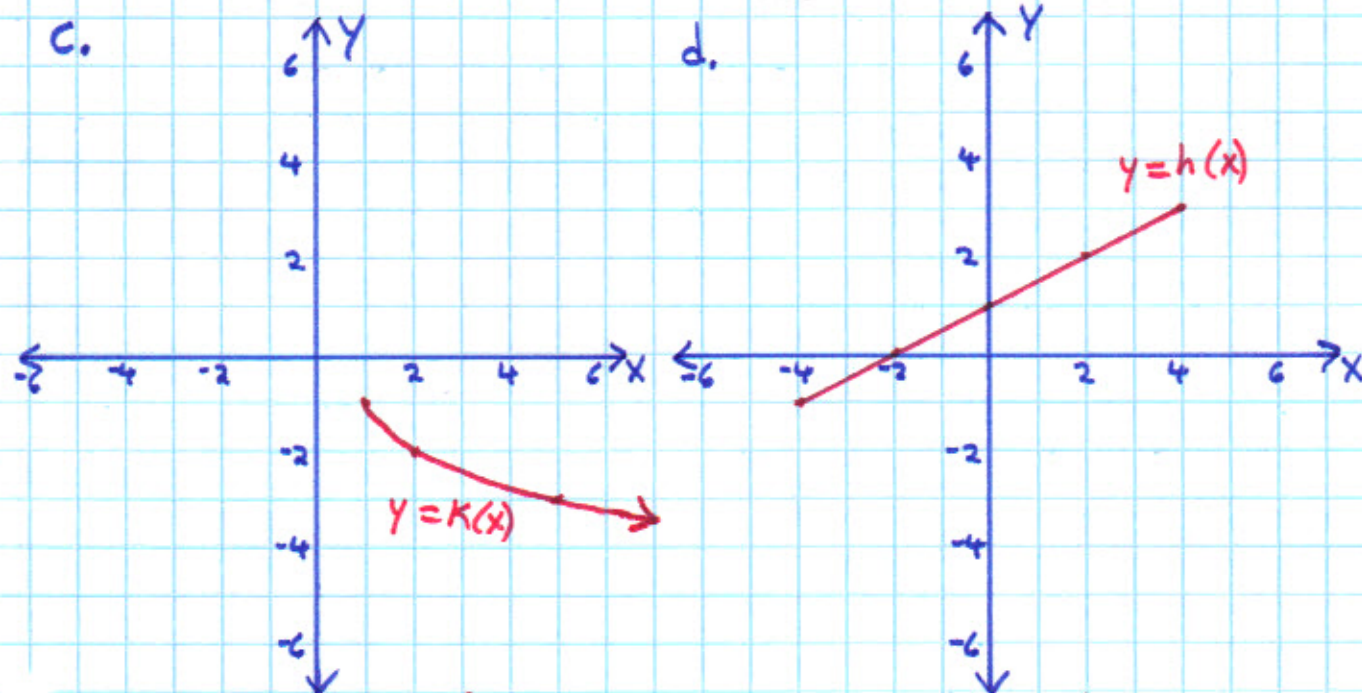


I. Reflect the graph of $y = f(x)$ over the x -axis.

I. Reflect the graph of $y = g(x)$ over the line $y = x$.

II. The graph of $y = f(x)$ is symmetric wrt what line?

II. Is the reflection a function?



I. Reflect the graph of $y = k(x)$ over the y -axis.

I. Reflect the graph of $y = h(x)$ over the origin.

II. What is the domain of $k(x)$?

II. What is the range of the reflection of $h(x)$?